

Dealing with Scarcity in Transportation: A New Reality

Eric Anderson, Transportation Director
Maricopa Association of Governments

Greater Phoenix Chamber of Commerce
Transportation Committee

Where does Transportation funding come from?

- Local Taxes
 - County and city sales taxes
 - General funds
- State Highway User Revenue Fund (HURF)
 - Gasoline and Use (Diesel) taxes
 - Vehicle License Taxes
- Federal Funds
 - Highway and transit formula funds
 - Discretionary grant programs
 - New starts / small starts
- Private Sector
 - Local development and impact fees
 - Exactions and dedications

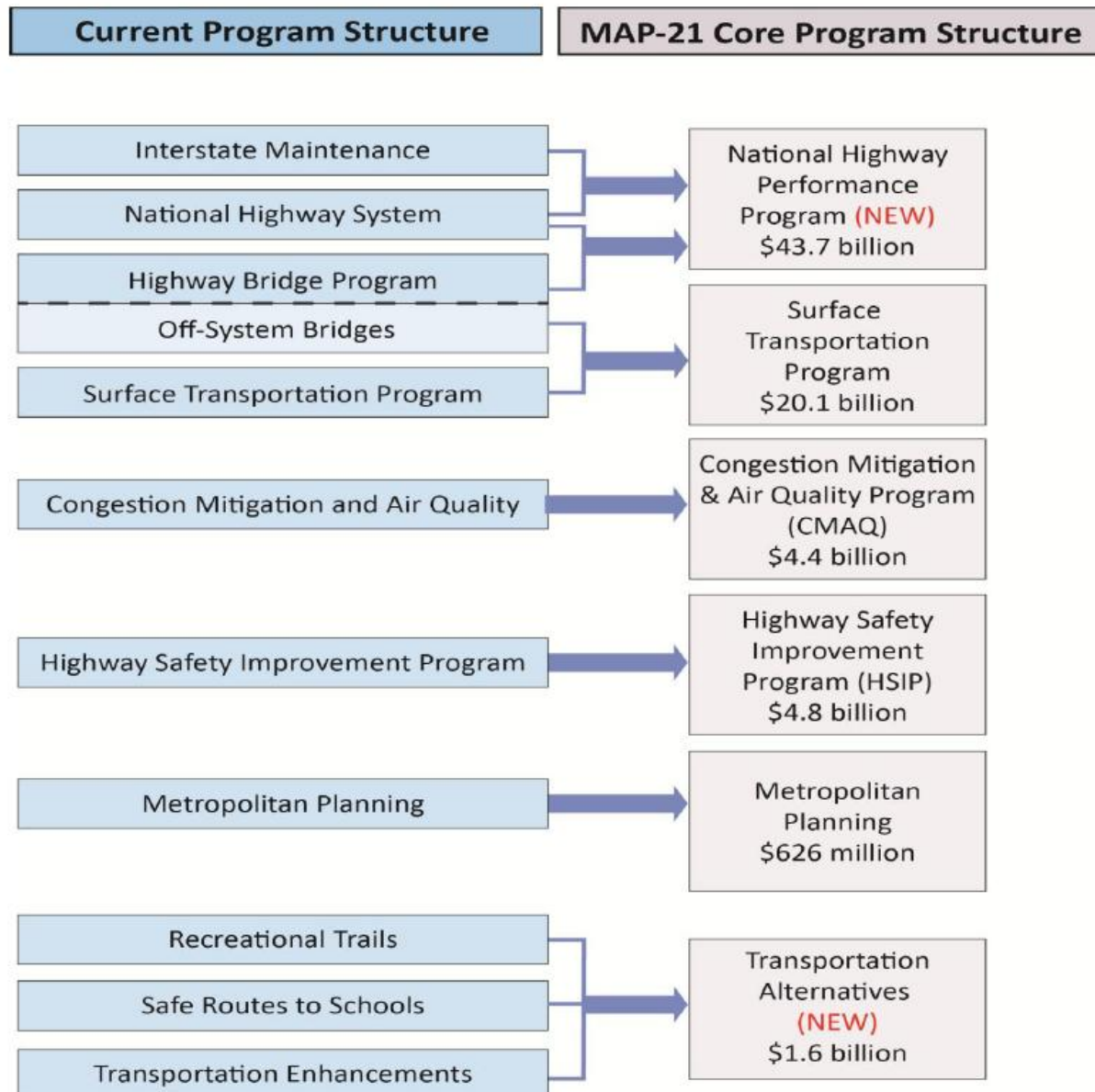
MAP-21 Provisions

- Program Consolidation
- Performance measures
- MPO funding
- Transit
- Streamlining
- Freight policy



White House Photo

Consolidated Highway Program Structure



Transit Program Provisions

New

- Safety Authority (5329)
- State of Good Repair Grants (5337)
- Asset Management (5326)
- Bus and Bus Facilities Formula Grants (5339)
- Public Transportation Emergency Relief (5324)
- TOD Planning Pilot Grants (20005(b) of MAP-21)

Repealed

- Clean Fuels Grants (5308)
- Job Access and Reverse Commute (5316) [JARC]
- New Freedom Program (5317)
- Paul S. Sarbanes Transit in the Parks (5320)
- Alternatives Analysis (5339)
- Over-the-Road Bus (Sec. 3038 – TEA-21)

Consolidated

- Urbanized Area Formula Grants (5307) [JARC]
- Enhanced Mobility of Seniors and Individuals with Disabilities (5310) [New Freedom]
- Rural Area Formula Grants (5311)[JARC]

Modified

- Fixed Guideway Capital Investment Grants (5309)
- Metropolitan and Statewide Planning (5303 & 5304)
- Research, Development, Demonstration, and Deployment (5312)
- Technical Assistance and Standards (5314)
- Human Resources and Training (5322)

MAP-21 Authorizations

Billions of dollars

	Highways	Research	Safety	Transit	Total
FFY 2013	40.568	0.400	1.231	10.578	52.777
FFY 2014	40.625	0.400	1.252	10.695	52.972
Total	81.193	0.800	2.483	21.273	105.749

HIGHWAY TRUST FUND PROJECTIONS

Based on CBO Score of MAP-21 (June 2012)

Highway Account

Fiscal Year	2012	2013	2014	2015	2016	2017	2018	2019	2020	2021	2022
Beginning-of-year Balance	\$14	\$8	\$4	\$4	-\$6	-\$15	-\$24	-\$33	-\$42	-\$52	-\$62
Revenues and Interest	\$33	\$33	\$33	\$34	\$35	\$36	\$36	\$36	\$36	\$37	\$37
Intragovernmental Transfers	\$2	\$6	\$10	\$0	\$0	\$0	\$0	\$0	\$0	\$0	\$0
Outlays	\$42	\$43	\$44	\$44	\$44	\$45	\$45	\$46	\$46	\$47	\$47
End-of-year Balance	\$8	\$4	\$4	-\$6	-\$15	-\$24	-\$33	-\$42	-\$52	-\$62	-\$72

Mass Transit Account

Fiscal Year	2012	2013	2014	2015	2016	2017	2018	2019	2020	2021	2022
Beginning-of-year Balance	\$7	\$5	\$5	\$1	-\$3	-\$7	-\$12	-\$16	-\$20	-\$24	-\$29
Revenues and Interest	\$5	\$5	\$5	\$5	\$5	\$5	\$5	\$5	\$5	\$5	\$5
Intragovernmental Transfers	\$0	\$0	\$2	\$0	\$0	\$0	\$0	\$0	\$0	\$0	\$0
Outlays	\$7	\$8	\$8	\$9	\$10	\$10	\$10	\$9	\$9	\$10	\$10
End-of-year Balance	\$5	\$5	\$1	-\$3	-\$7	-\$12	-\$16	-\$20	-\$24	-\$29	-\$33

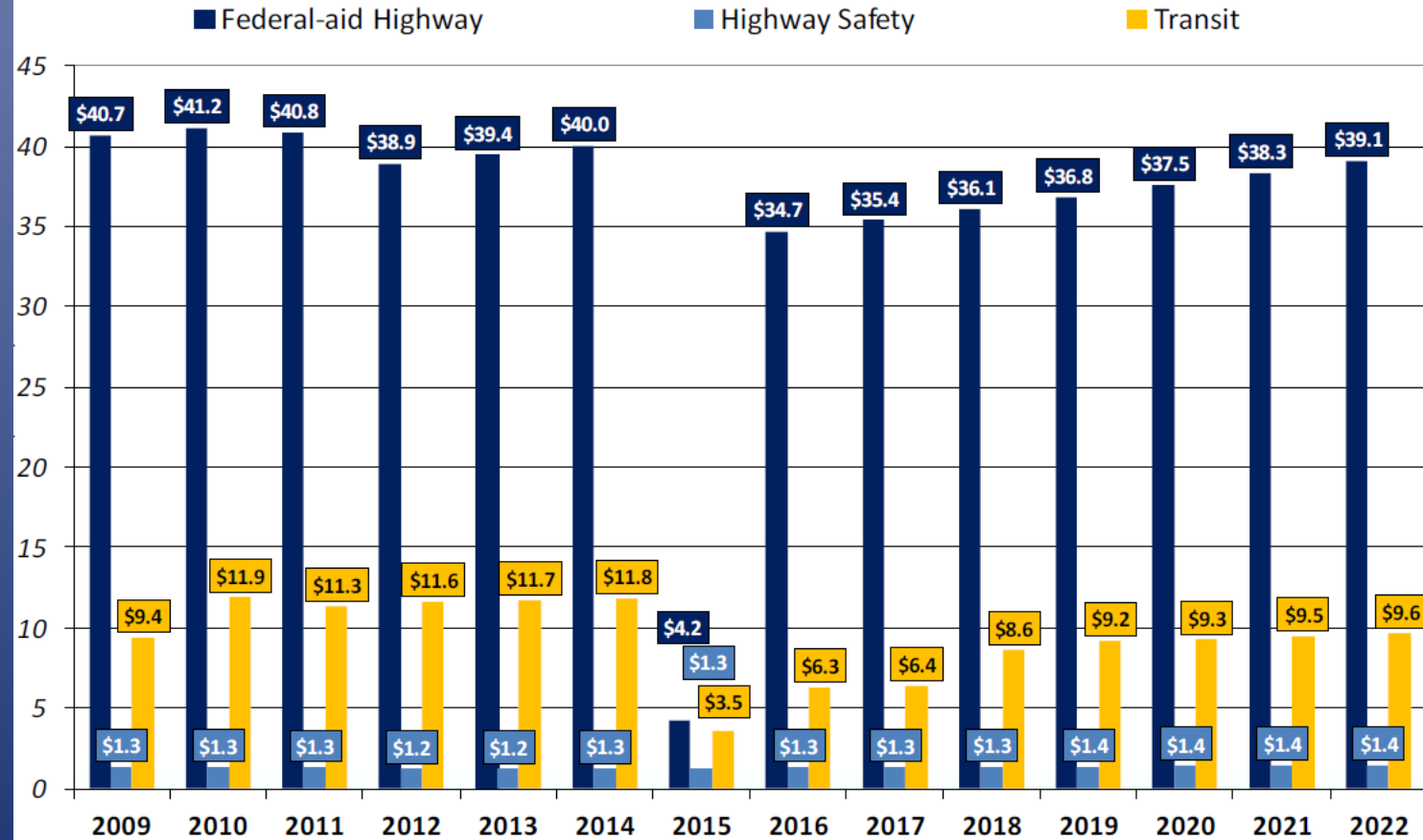
TOTAL HTF BALANCE	\$13	\$9	\$5	-\$9	-\$22	-\$36	-\$49	-\$62	-\$76	-\$91	-\$105
--------------------------	-------------	------------	------------	-------------	--------------	--------------	--------------	--------------	--------------	--------------	---------------

Estimation of Federal Highway and Transit Obligations Through 2022

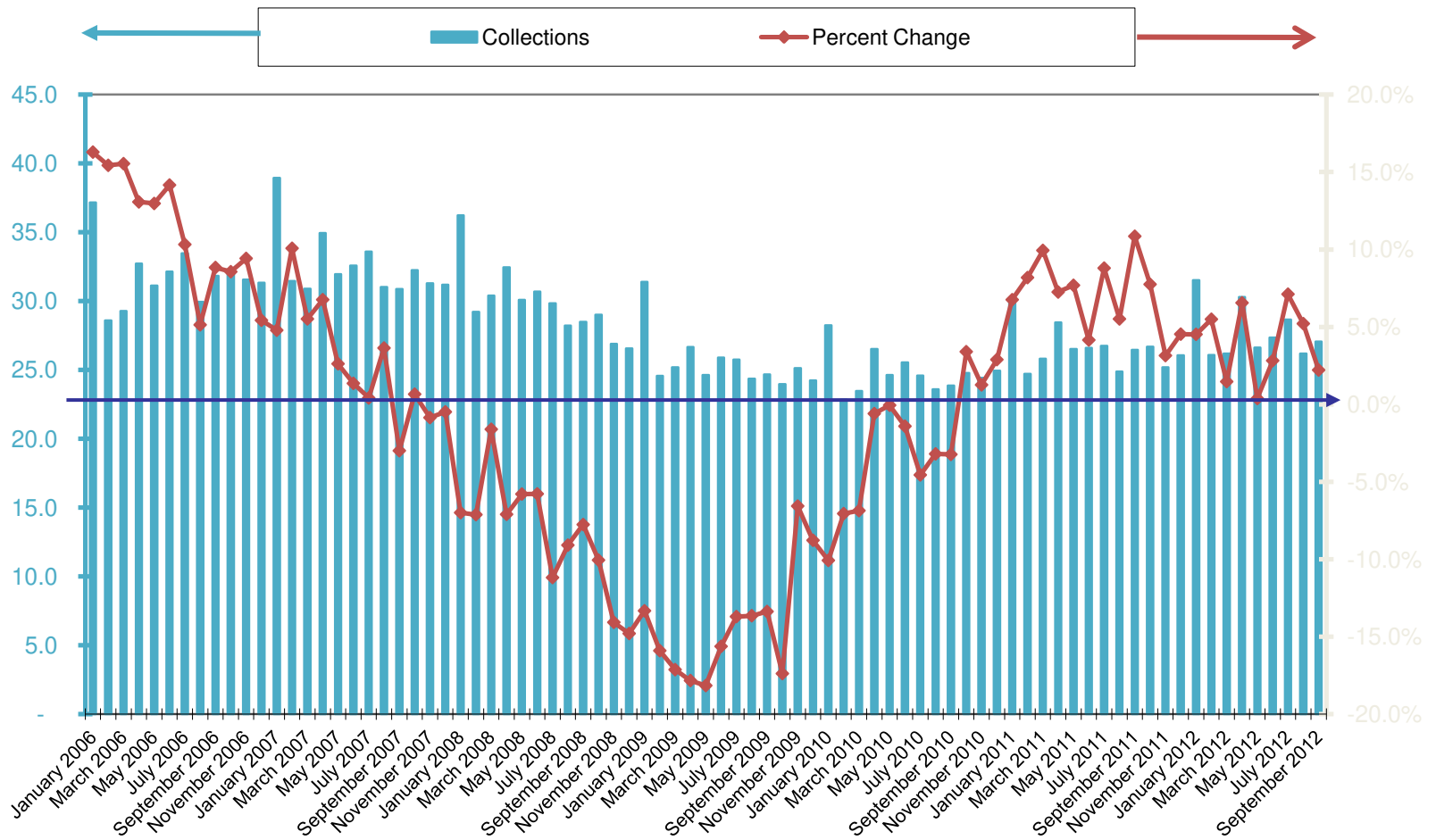
Based on MAP-21;

Assuming "minimum prudent balance" of \$4 billion in Highway Account and \$1 billion in Mass Transit Account;

Assumes historical General Fund appropriations for transit.

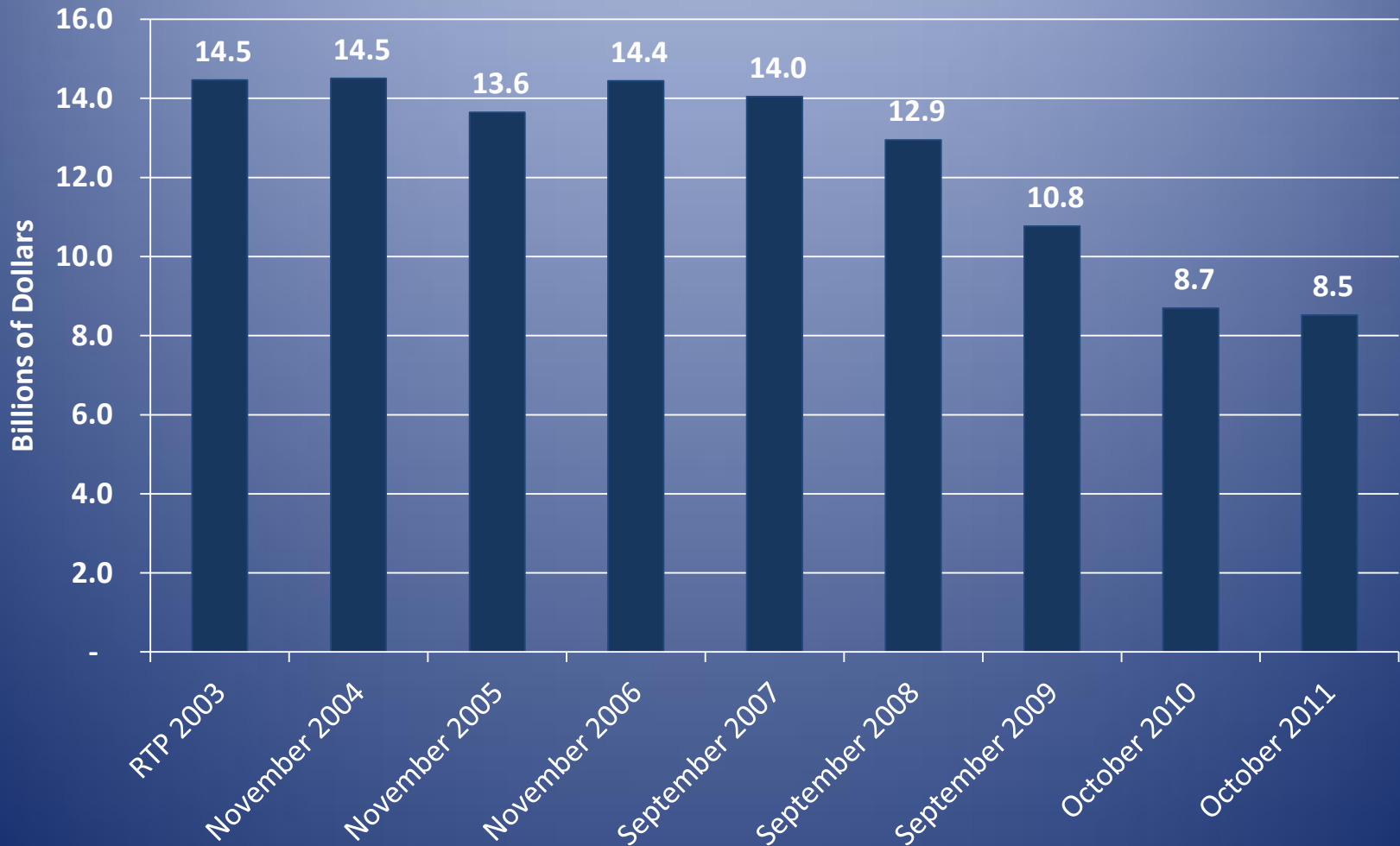


Proposition 400 Sales Tax Collections

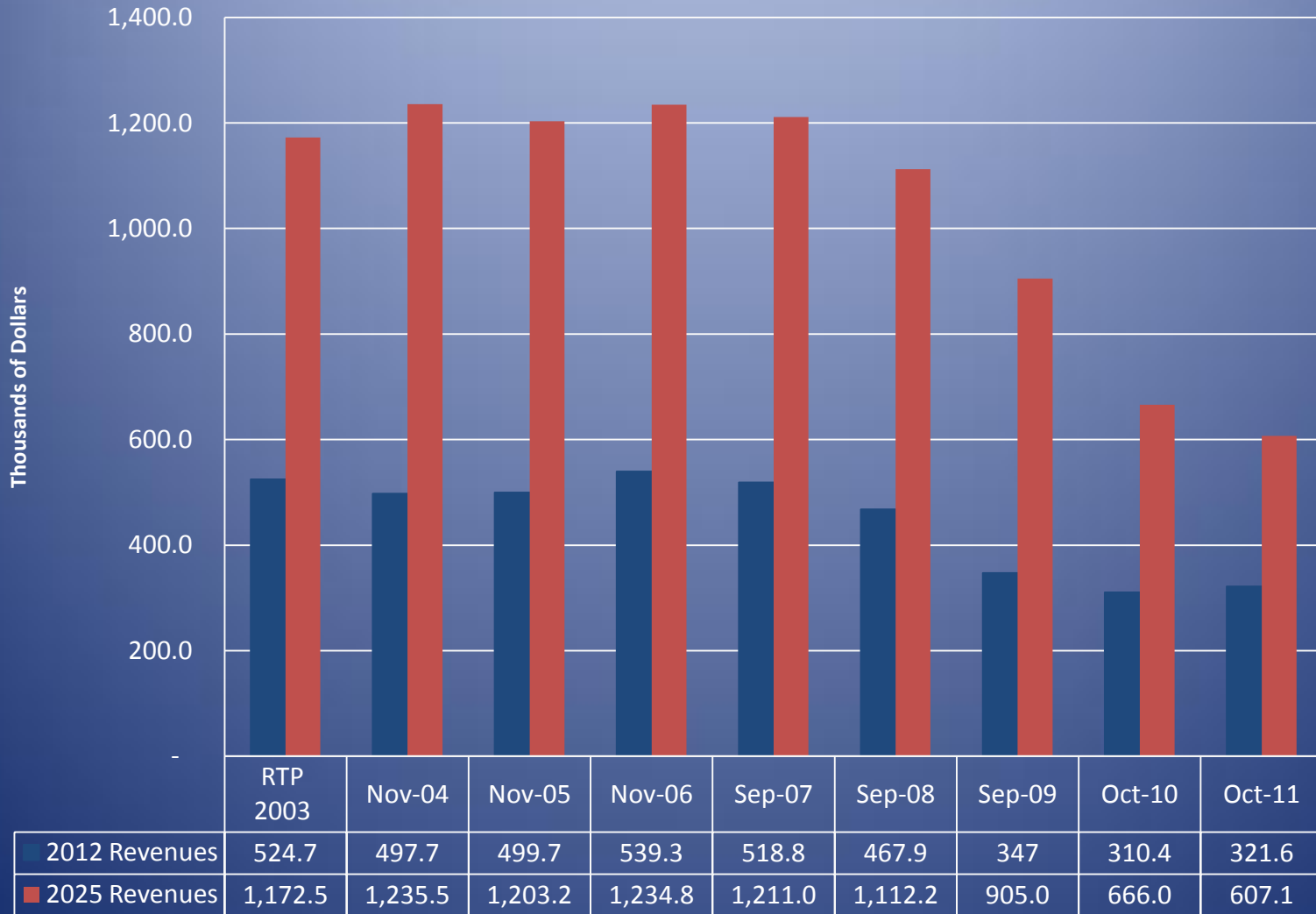


Proposition 400 Sales Tax Revenue

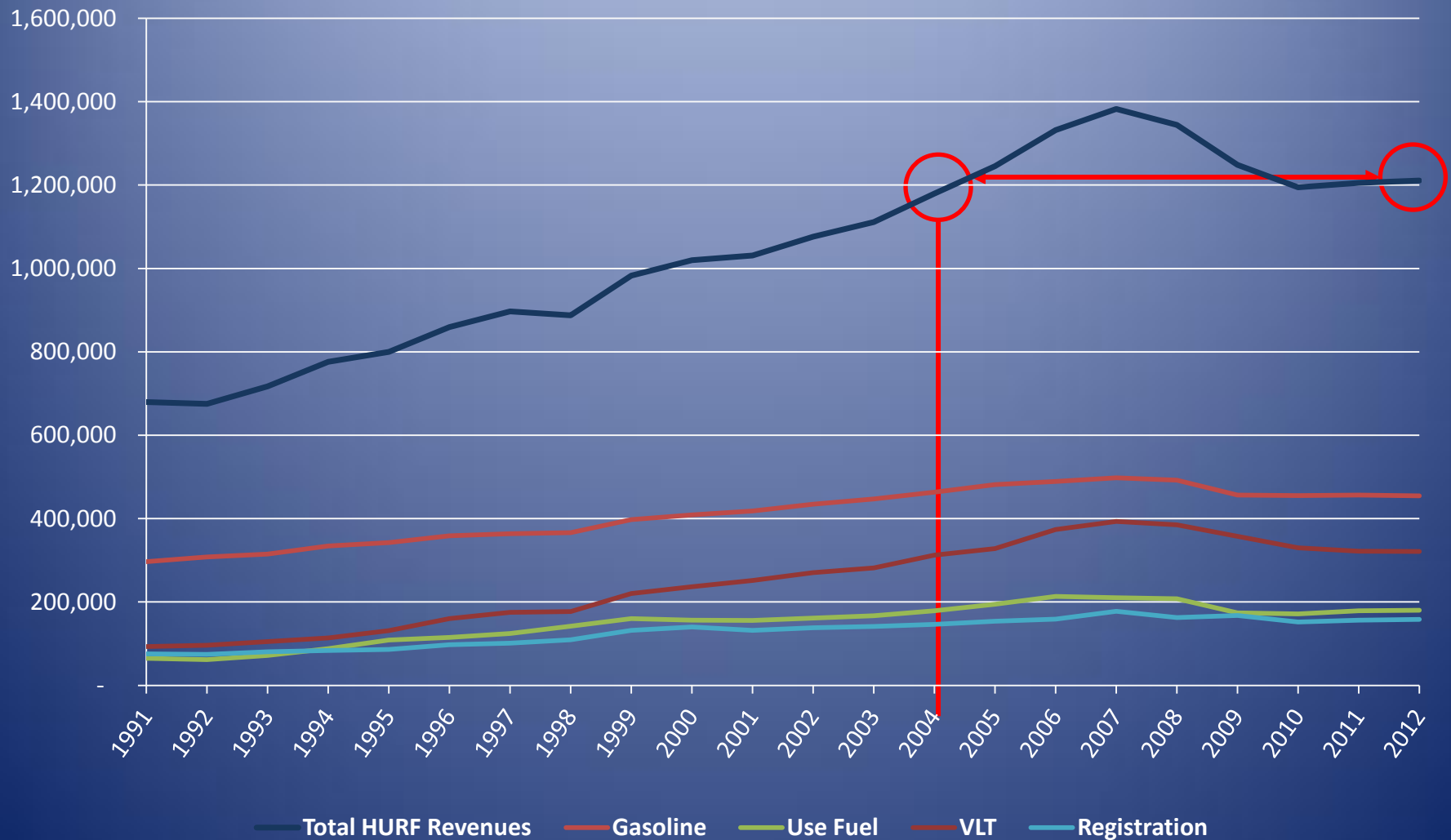
FY 2006 to FY 2026



Comparison of FY 2012 and FY 2025 Sales Tax Revenues

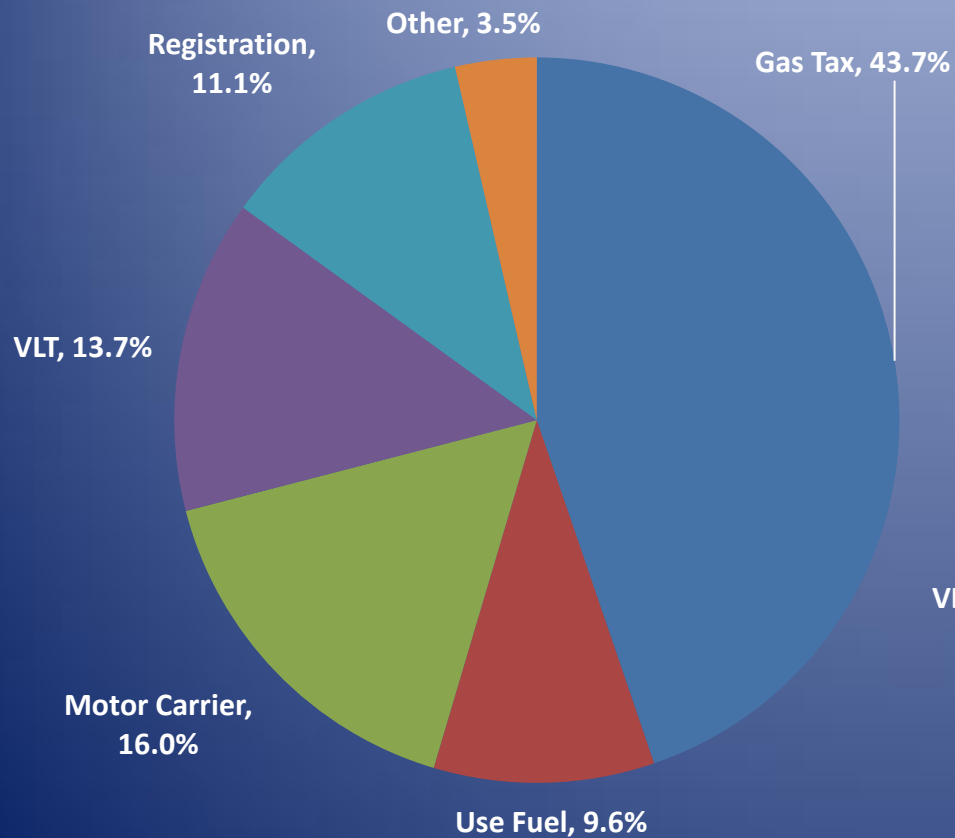


ARIZONA HIGHWAY USER REVENUE FUND REVENUES

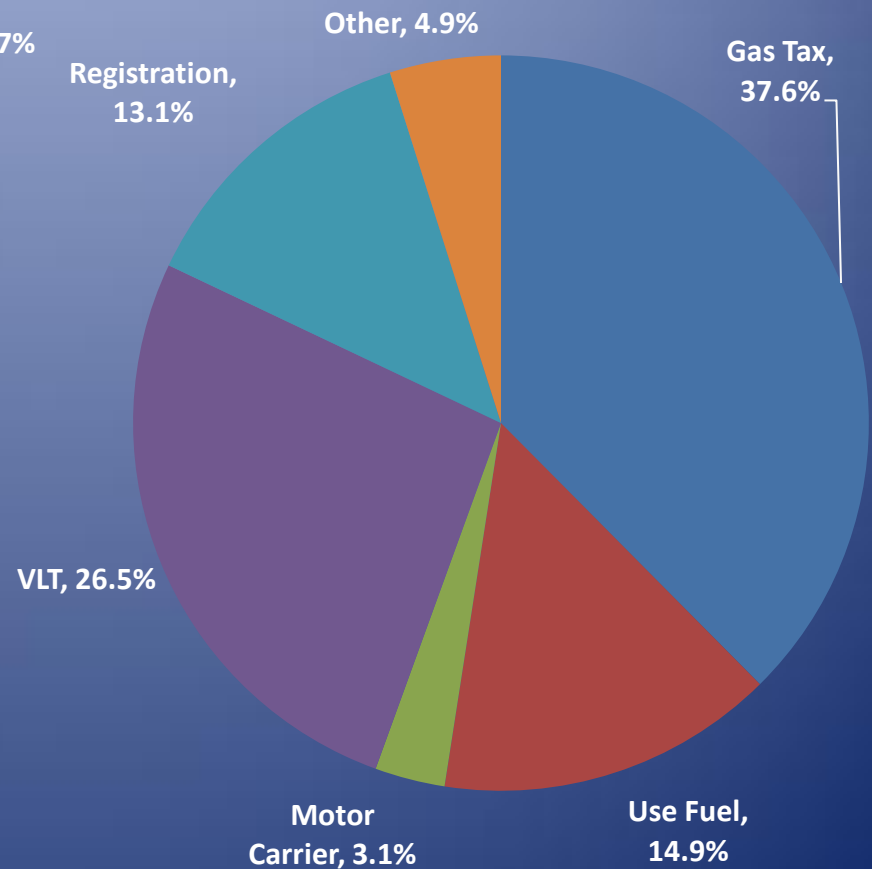


COMPOSITION OF THE ARIZONA HIGHWAY USER REVENUE FUND

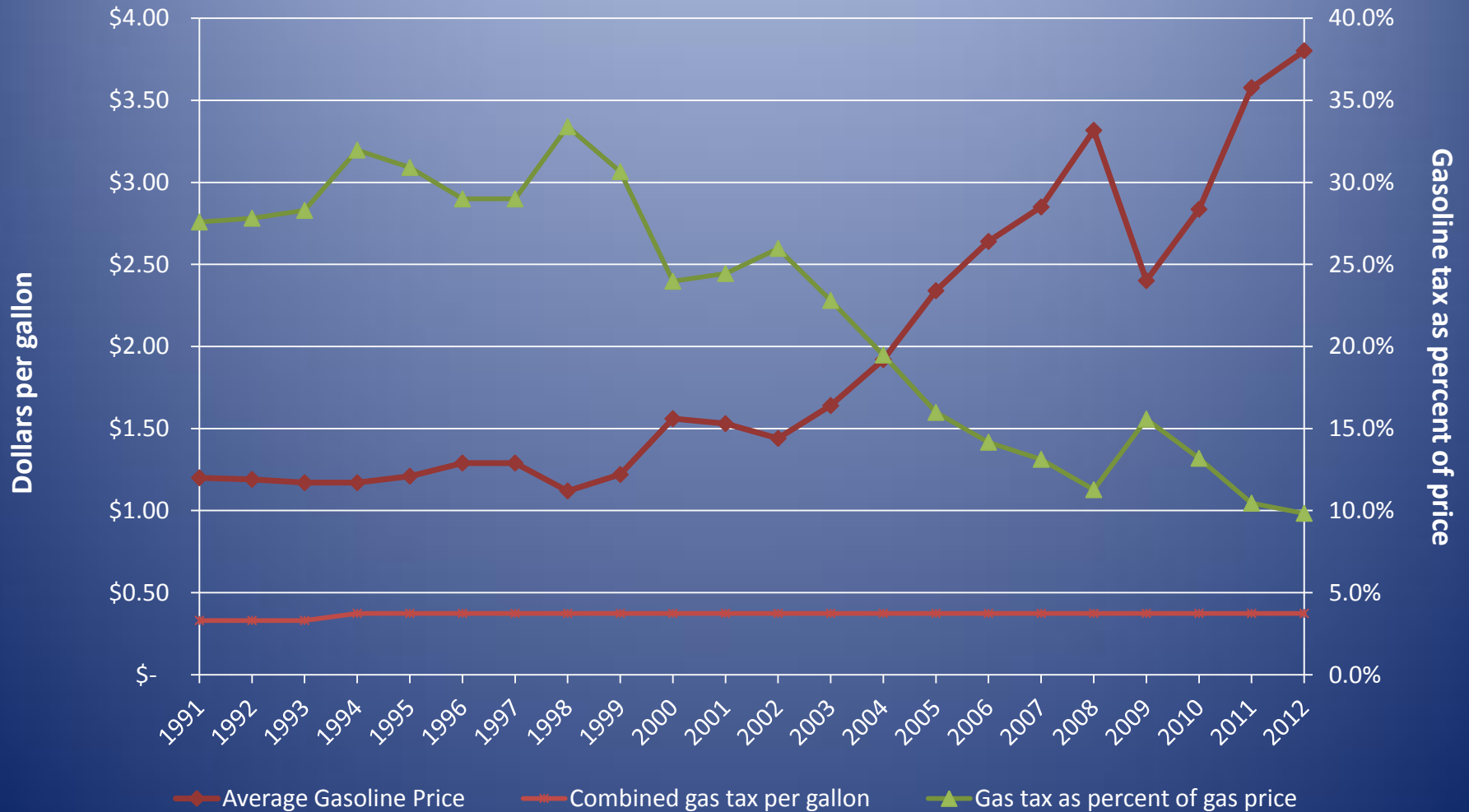
1991



2012

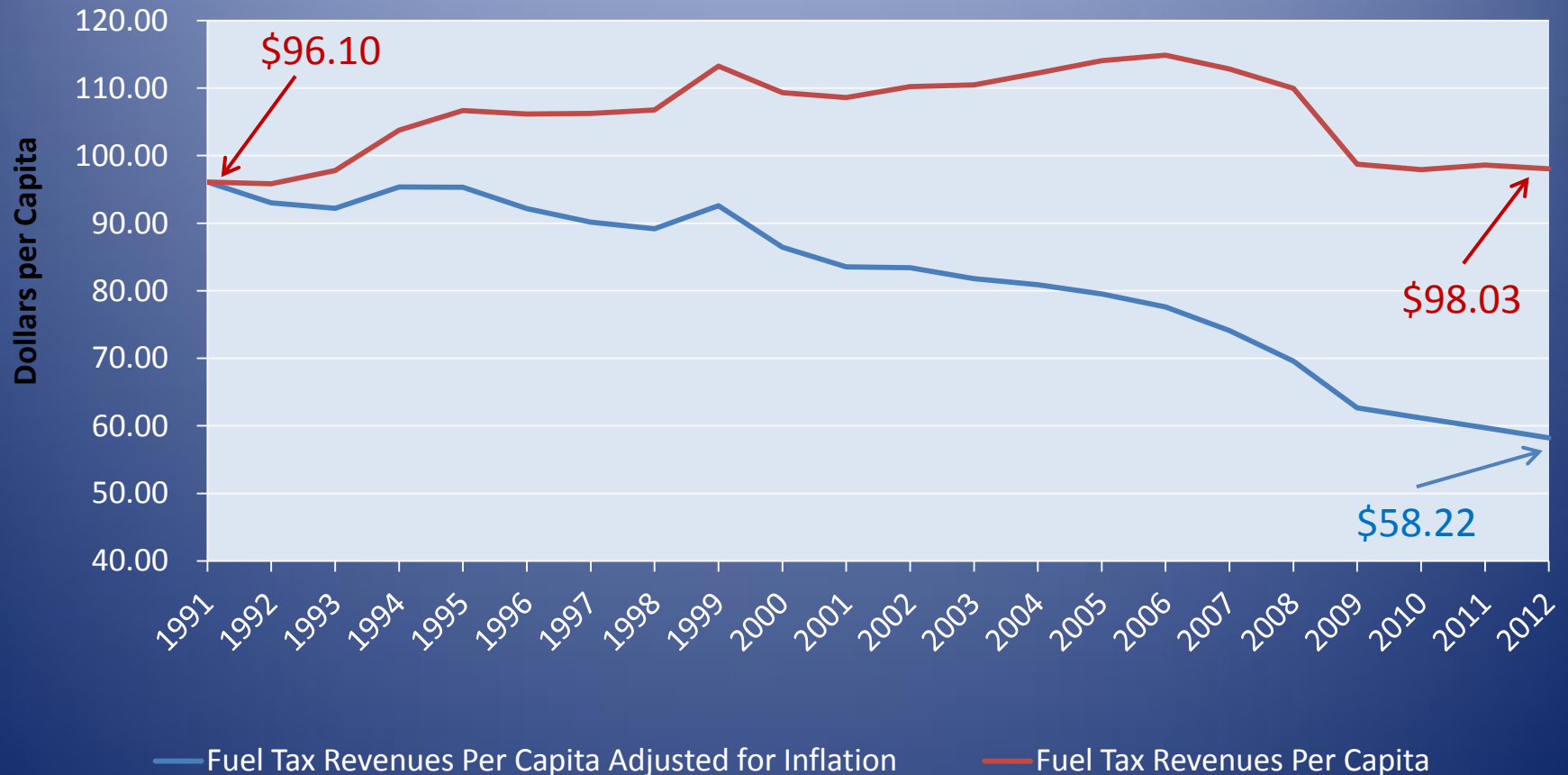


Gasoline Taxes and Gasoline Prices

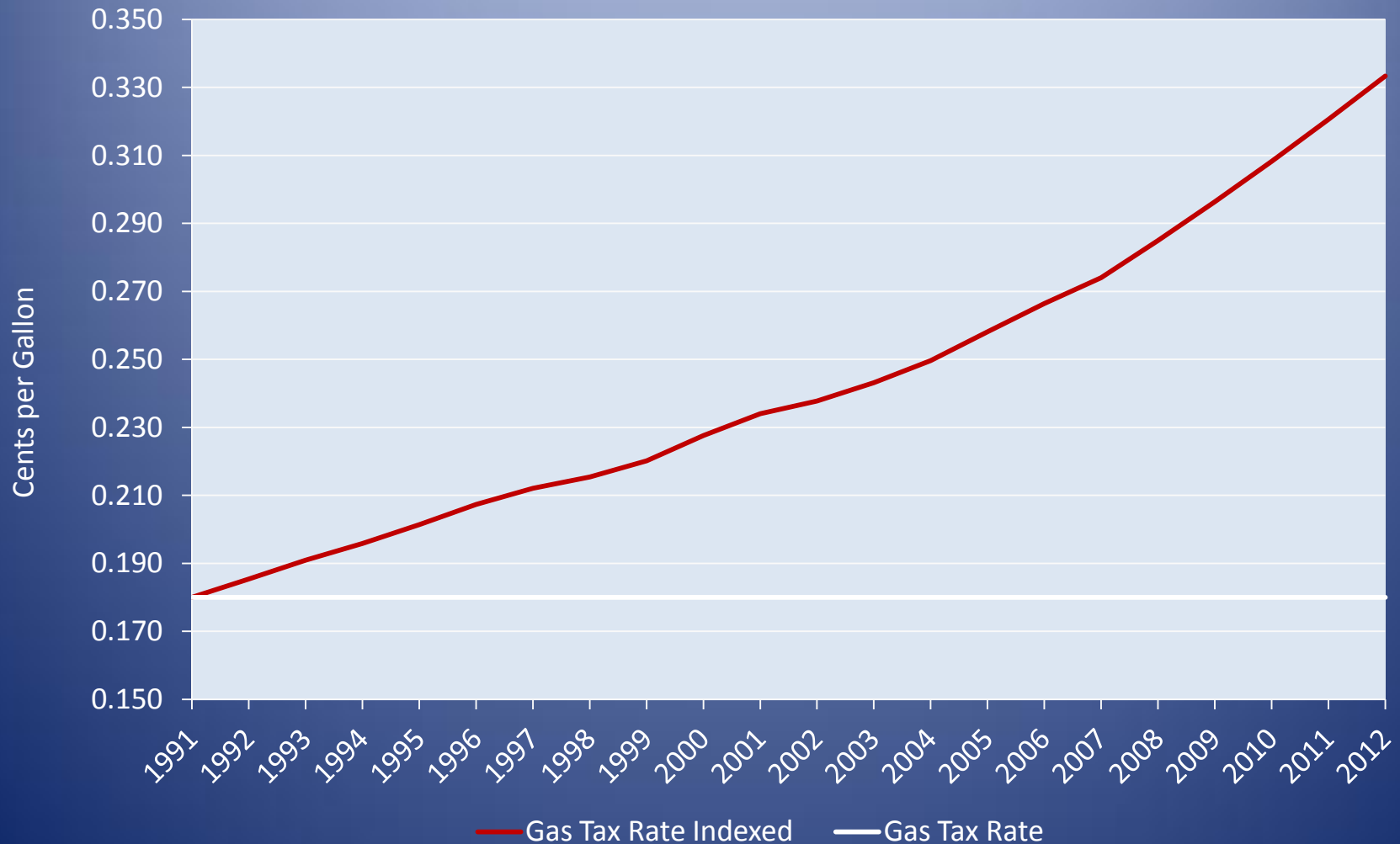


Arizona Fuel Tax Revenues Per Capita

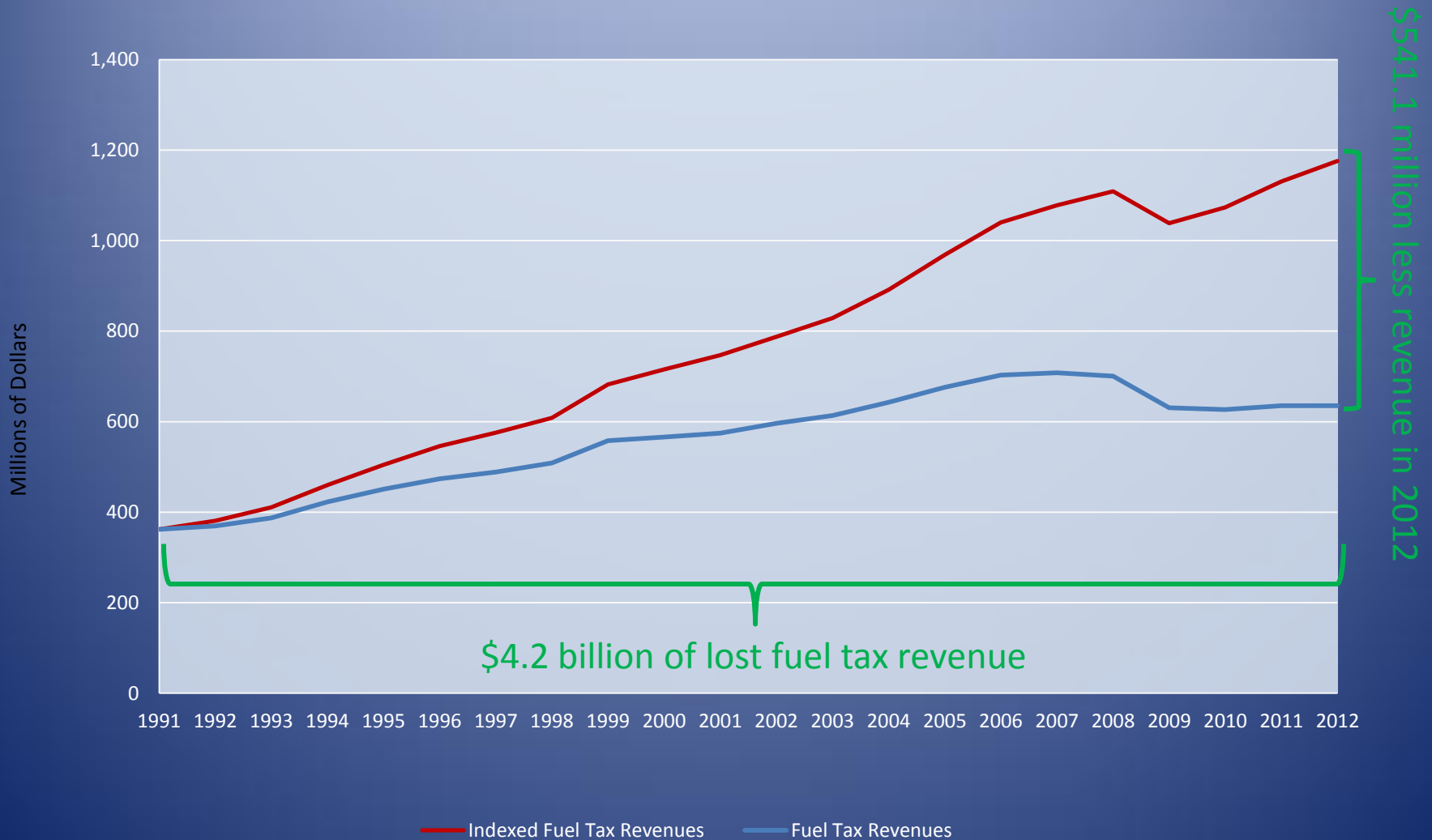
Adjusted for Inflation Since 1991
(Includes Gasoline and Use Fuel)



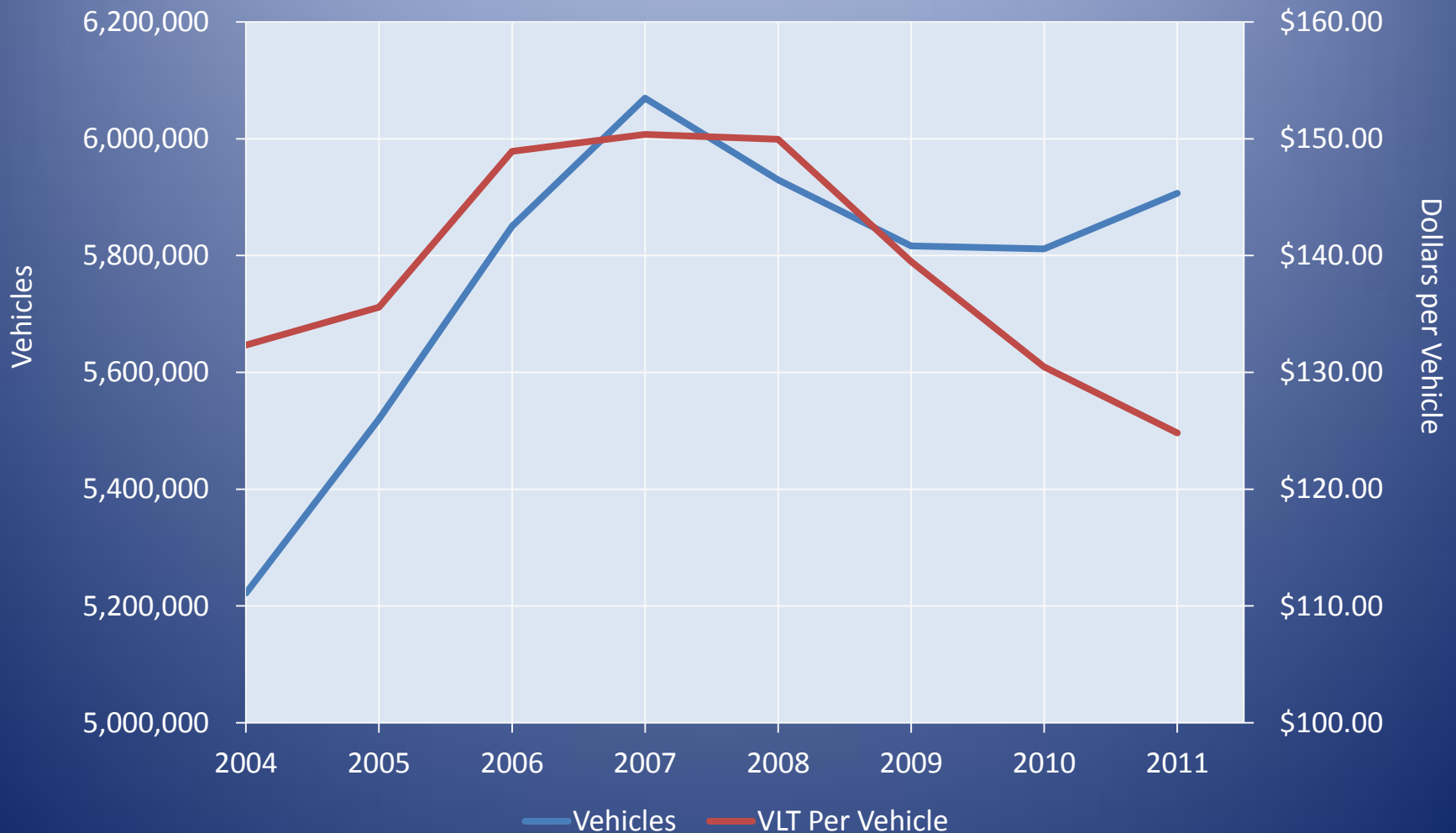
Arizona Gasoline Tax Indexed to Inflation



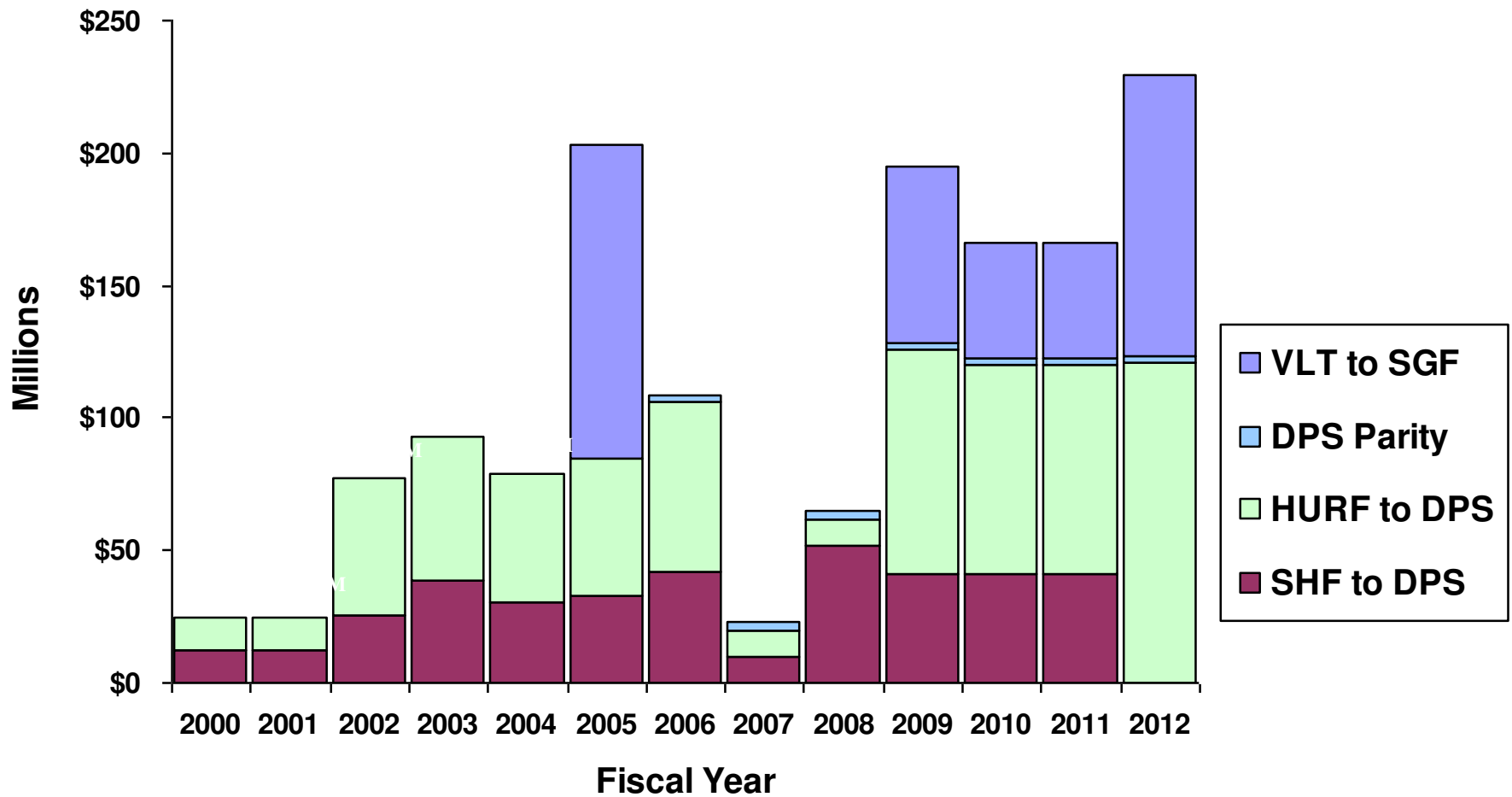
Arizona Fuel Tax Revenues Adjusted for Inflation Since 1991



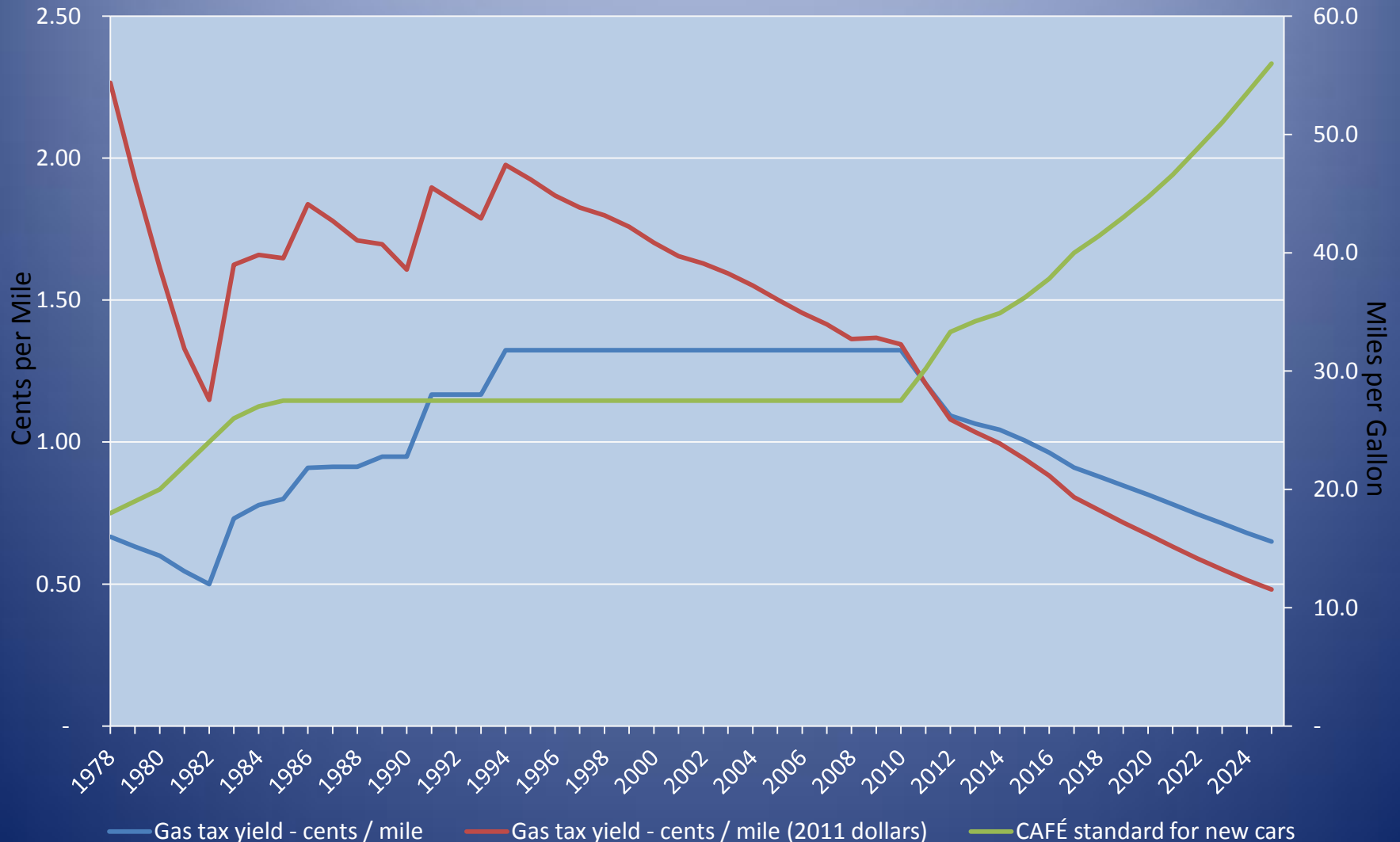
Recession Impact on Vehicle License Tax



Sweep of HURF Funds



CAFE Standards and Gas Tax Yield Per Mile



Thanks!

Eric Anderson, Transportation Director
Maricopa Association of Governments

Eanderson@azmag.gov

www.azmag.gov

602.254.6300