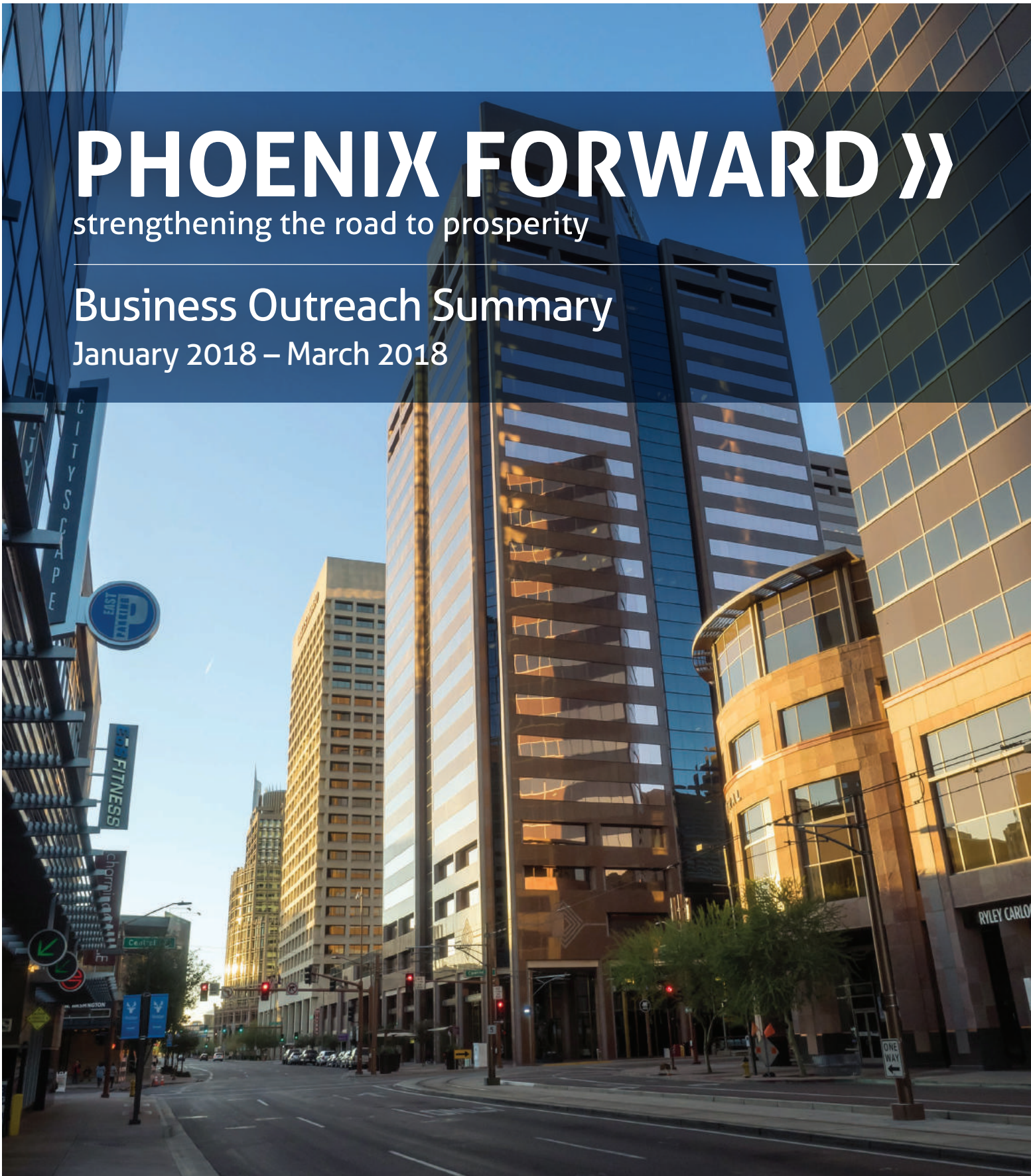


PHOENIX FORWARD »

strengthening the road to prosperity

Business Outreach Summary

January 2018 – March 2018



10 REASONS DOWNTOWN PHOENIX IS THE PLACE FOR BUSINESS GROWTH

Take a look how far downtown Phoenix has come in the past decade, and what makes it the best place for business growth.

1. Since 2004, companies have invested \$5.5 billion in redeveloping a 1.7 square mile area in the heart of downtown Phoenix. ¹
2. Approximately 9,000 people call the heart of downtown Phoenix home thanks to the redevelopment and increased residential options in the 1.7 square mile area. ¹
3. Since 2000, approximately 6,400 housing units have been built in the area. ¹
4. In the past ten years, more than 5,000 apartment units have been built in the area. There are currently more than 2,000 additional apartment units under construction. ¹
5. Between the fourth quarter of 2017 and the first quarter of 2019, the warehouse district will have seen more than 250,000 square feet restored and used for business, entertainment and creative uses. ¹
6. In the nine-year period between 2006 and 2015 employment grew by 8.9 percent in the area. ³

DOWNTOWN PHOENIX

9,000 people

6,400 new housing units

2,000 apartments in the works

Growing employment opportunities

Booming technology sector

7. More than 195,000 people work in a 3-mile radius of downtown Phoenix. ¹
8. Technology companies in downtown Phoenix have increased by 318 percent since 2012. ²
9. Between 2012 and 2017, the number of technology companies increased from 67 companies to 281 companies. ²
10. Between 2012 and 2017, the number of people employed by technology and technology-related companies increased from 1,800 to 7,000. ²

GPCC member highlights:

- Uber employs more than 500 people at the Collier Center. ¹
- WebPT employs more than 300 people in the warehouse district. ²
- Equality Health employees more than 80 people. ²

¹ Data from Downtown Phoenix Inc.
² Data from City of Phoenix
³ Data from Rounds Consulting Group

BUSINESS OUTREACH VISITS **253**



Sector	Number of Visits
Advanced Business & Financial Services...	56
Bioscience.....	3
Health Care	49
Transportation & Logistics.....	10
Construction	15
Manufacturing	30
Other	90

*Other includes business sectors with fewer than 15 visits.



ANTICIPATED GROWTH

The *Phoenix Forward* partners worked individually and in teams to support the expansion of existing businesses in the region. During these visits, companies indicated the following anticipated growth: **2,549 new jobs** representing **\$110.1 million** in payroll, **\$229.5 million** in capital investment, and **631,600 square feet** in new building space.

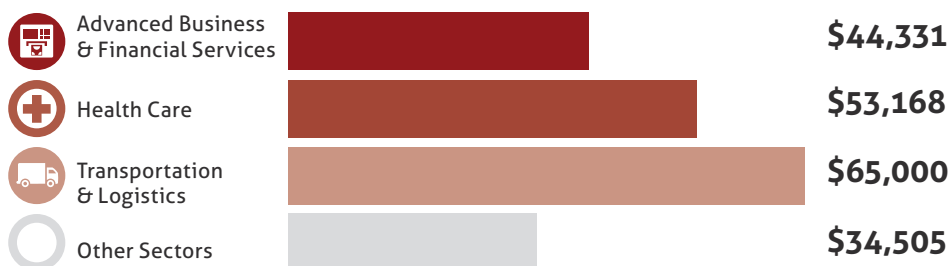
The numbers below reflect updated figures that were reported as a result of follow-up to previous visits.

NUMBER OF PROJECTED NEW JOBS

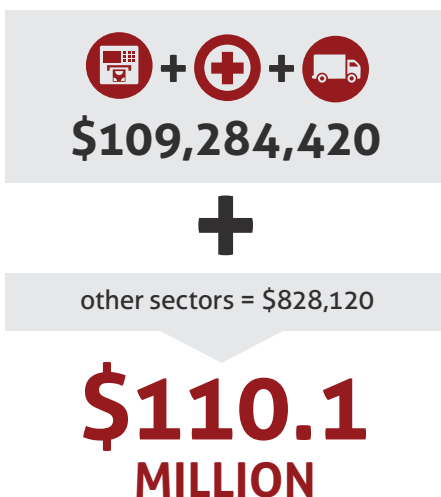
TOTAL PROJECTED NEW JOBS ALL SECTORS: **2,549**



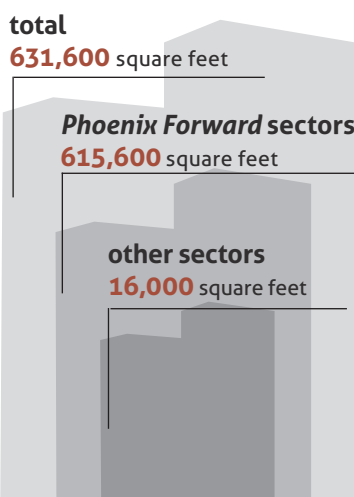
PROJECTED AVERAGE WAGE OF NEW JOBS



PAYROLL ADDED TO THE ECONOMY



NEW BUILDING EXPANSION



Planned capital investment of **\$229,480,000** in the next year

92% of the companies expect revenues to increase in the next year

98% of companies rated the business climate as excellent or good



PHOENIX FORWARD » INVESTORS

FOUNDERS



CHAMPIONS



Delivering power and water™

TRUSTEES



PATRONS

Bank of Arizona
Delta Dental of AZ
Dignity Healthcare
DMB

Freeport-McMoRan Inc.
HonorHealth
KPHO CBS 5

Mercy Care Plan
Snell & Wilmer
Southwest Gas

Sunstate Equipment Co.
The Weitz Company
Wells Fargo Bank

LEADERS

Alliance Bank
Merchants Information
Solutions
Polsinelli

Quarles and Brady, LLP
Republic Media
Sundt Construction

SUPPORTERS

Community Tire Pros
Ernst & Young

Mercy Maricopa
Off Madison Ave.

CONTACT US



Jennifer Mellor
Vice President of
Economic Development
jmellor@phoenixchamber.com
602.495.6491
201 N. Central Ave. 27th Floor
Phoenix 85004
phxforward.com



Kevin Sullivan
Senior Vice President,
Business Attraction and Expansion
kevins@AZcommerce.com
602.845.1261
118 N. 7th Ave. Suite 400
Phoenix 85007
azcommerce.com



City of Phoenix

Michelle T. Pierson
Deputy Economic Development Director
michelle.pierson@phoenix.gov
602.256.5656
Community and Economic Development
200 W. Washington St. 20th Floor
Phoenix 85003
phoenix.gov/econdev



Shelby L. Scharbach
Assistant County Manager,
Chief Financial Officer
sscharba@mail.maricopa.gov
602.506.3545
301 W. Jefferson St. 10th Floor
Phoenix 85003
maricopa.gov